

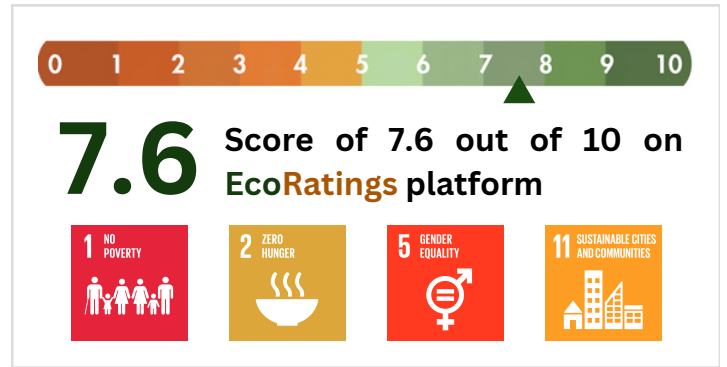
AADIVASI WOMEN'S HEAVY EMBROIDERY STOLE

Tribe: Tribes of West Bengal

Company: IMPCA Services Pvt. Ltd

Industry: Handicrafts

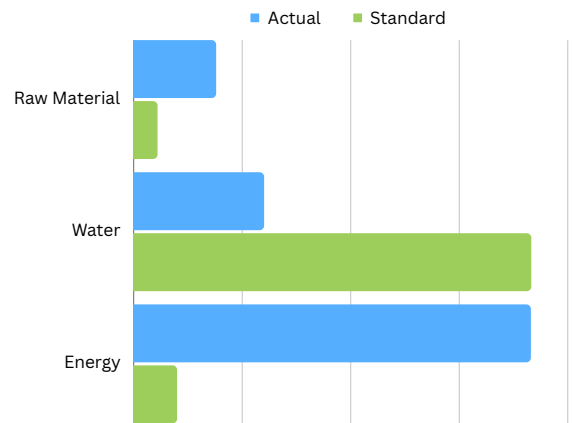
Location: India



ESG Pillars



Contribution to Environment 5.3



9.4 Social Impact



Over 95% of their workforce is women

Promoting traditional handicrafts and supporting artisans.

No chemicals or toxins used in the production process.

Training schools for tribes across the country.

8.5 Governance Index

GST Contributes to the government by paying taxes, including GST

Clean litigation record

Standards	
Raw Materials	Carbon Footprint of Tassar Silk is 55% worse than standard.
Women %	Women account for only 12% of the manufacturing workforce.
Water Footprint	Water Footprint of Tassar Silk is 90% worse than standard.
Energy Footprint	Footprint Energy Footprint of Tassar Silk is 91 % worse than standard.
Packaging	Cardboard & Paper: 0.94kg carbon emissions per 1kg of packaging Styrofoam: 1.16kg carbon emissions per 1kg of packaging Aluminum: 2.32kg carbon emissions per 1kg of packaging Plastic: 3.50kg carbon emissions per 1kg of packaging

7.6 | EcoRatings

WHAT DOES THIS MEAN?

An EcoRating of 7.6 indicates that the product surpasses the combined sustainability efforts on ESG criterias by around 10% when compared to others in the category.

Here's what this signifies:

- ▲ A green arrow in your scorecard means that you are doing better than industry standards. Lowering consumption by more than 30% as compared to standards is considered exceptional.
- ◆ A yellow arrow in your score shows that you are at industry standards.
- ▼ A red arrow in your score shows that you're currently below industry standards, and there is scope for improvement.

