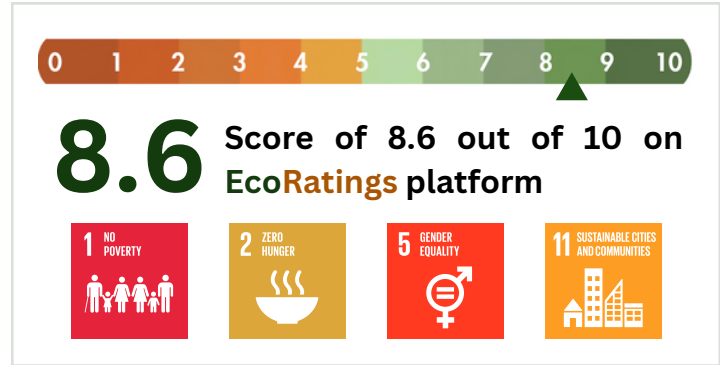


AADIVASI JUTE FILE FOLDER

Tribe: HO JHARKHAND Tribe
Company: IMPCA Services Pvt. Ltd
Industry: Handicrafts
Location: India



ESG Pillars

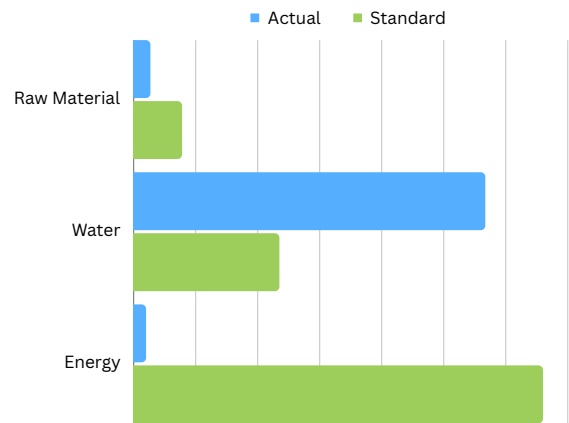


8.2 Contribution to Environment

Carbon Emission of Jute
2.7 KG CO2e per meter



The carbon emissions associated with the raw materials of a Jute File Folder are 65% lower than industry standards.



8.9 Social Impact



Over 95% of their workforce is women

Promoting traditional handicrafts and supporting artisans.

No chemicals or toxins used in the production process.

Training schools for tribes across the country.

8.5 Governance Index

GST Contributes to the government by paying taxes, including GST

Clean litigation record

Standards	
Raw Materials	Carbon Footprint of Jute is 65% lower than standard.
Women %	Women account for only 12% of the manufacturing workforce.
Water Footprint	Water Footprint of Jute is 58% higher than standard.
Energy Footprint	Energy Footprint of Jute is 96% lower than standard.
Packaging	Cardboard & Paper: 0.94kg carbon emissions per 1kg of packaging Styrofoam: 1.16kg carbon emissions per 1kg of packaging Aluminum: 2.32kg carbon emissions per 1kg of packaging Plastic: 3.50kg carbon emissions per 1kg of packaging

8.6 | EcoRatings

WHAT DOES THIS MEAN?

An EcoRating of 8.6 indicates that the product surpasses the combined sustainability efforts on ESG criterias by around 25% when compared to others in the category.

Here's what this signifies:

- ▲ A green arrow in your scorecard means that you are doing better than industry standards. Lowering consumption by more than 30% as compared to standards is considered exceptional.
- ◆ A yellow arrow in your score shows that you are at industry standards.
- ▼ A red arrow in your score shows that you're currently below industry standards, and there is scope for improvement.

