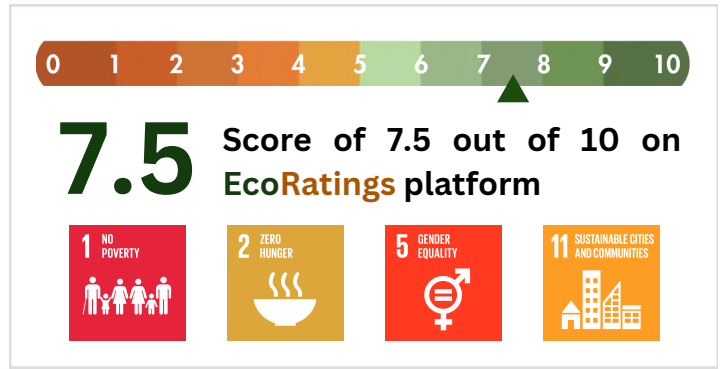


## AADIVASI CUSHION COVER SET

Tribe: Arka Jain University, Jharkhand  
 Company: IMPCA Services Pvt. Ltd  
 Industry: Handicrafts  
 Location: India

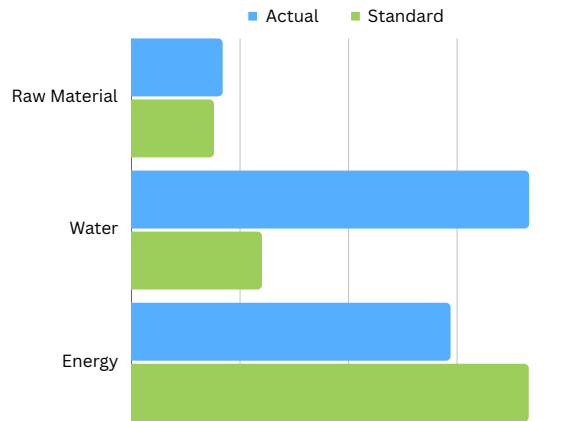


## ESG Pillars



### Contribution to Environment 6.2

- RECYCLABLE AND BIODEGRADABLE
- NO CHEMICALS OR TOXINS
- NO PLASTIC USED



### Social Impact 8.6



Over 95% of their workforce is women

- Promoting traditional handicrafts and supporting artisans.
- Easily accessible through Adivasi, across India and abroad.
- Training schools for tribes across the country.

### Governance Index 7.5

**GST** Contributes to the government by paying taxes, including GST

**Clean litigation record**

Standards	
Raw Materials	Carbon Footprint of Silk is 3.8 kg CO2e per kg
Women %	Women account for only 12% of the manufacturing workforce.
Water Footprint	Water Footprint of Silk is 601 Liters per kg.
Energy Footprint	Energy Footprint of Silk is 183.2 MJ per kg.
Packaging	Cardboard & Paper: 0.94kg carbon emissions per 1kg of packaging Styrofoam: 1.16kg carbon emissions per 1kg of packaging Aluminum: 2.32kg carbon emissions per 1kg of packaging Plastic: 3.50kg carbon emissions per 1kg of packaging

## 7.5 | EcoRatings

### WHAT DOES THIS MEAN?

An EcoRating of 7.5 indicates that the product surpasses the combined sustainability efforts on ESG criterias by around 10% when compared to others in the category.

Here's what this signifies:

- ▲ A green arrow in your scorecard means that you are doing better than industry standards. Lowering consumption by more than 30% as compared to standards is considered exceptional.
- ◆ A yellow arrow in your score shows that you are at industry standards.
- ▼ A red arrow in your score shows that you're currently below industry standards, and there is scope for improvement.

