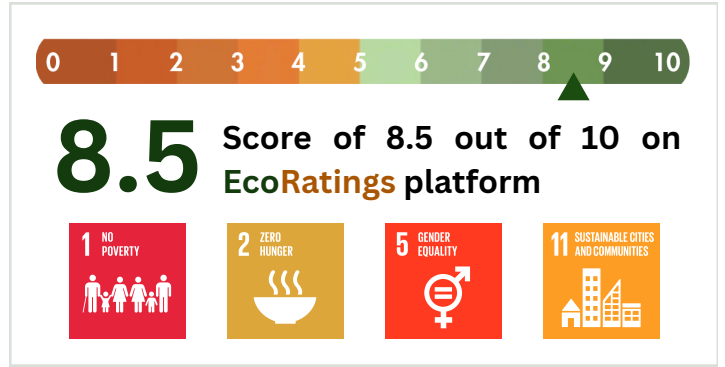


AADIVASI BAMBOO LAMPSHADE

Tribe: Tripura Tribe
Company: IMPCA Services Pvt. Ltd
Industry: Handicrafts
Location: India

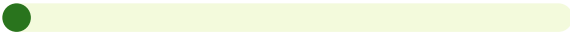


ESG Pillars

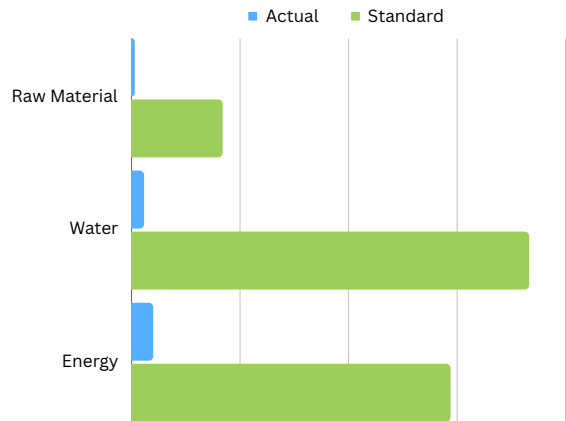


8.6 Contribution to Environment

Carbon Emissions of Bamboo
0.015 KG CO₂e per KG



The carbon emissions associated with the raw materials of a bamboo lampshade are over 99.5% lower than an cotton lampshade.



8.7 Social Impact



Over 95% of their workforce is women

Promoting traditional handicrafts and supporting artisans.

Easily accessible through Adivasi, across India and abroad.

Training schools for tribes across the country.

7.5 Governance Index

GST Contributes to the government by paying taxes, including GST

Clean litigation record

Standards	
Raw Materials	Carbon Footprint of Cotton is 4.2 kg CO2e per kg
Women %	Women account for only 12% of the manufacturing workforce.
Water Footprint	Water Footprint of Cotton is 1832 Liters per kg.
Energy Footprint	Energy Footprint of Cotton is 147 MJ per kg.
Packaging	Cardboard & Paper: 0.94kg carbon emissions per 1kg of packaging Styrofoam: 1.16kg carbon emissions per 1kg of packaging Aluminum: 2.32kg carbon emissions per 1kg of packaging Plastic: 3.50kg carbon emissions per 1kg of packaging

8.5 | EcoRatings

WHAT DOES THIS MEAN?

An EcoRating of 8.5 indicates that the product surpasses the combined sustainability efforts on ESG criterias by around 25% when compared to others in the category.

Here's what this signifies:

- ▲ A green arrow in your scorecard means that you are doing better than industry standards. Lowering consumption by more than 30% as compared to standards is considered exceptional.
- ◆ A yellow arrow in your score shows that you are at industry standards.
- ▼ A red arrow in your score shows that you're currently below industry standards, and there is scope for improvement.

